

Thermal Insulation Investigation

My Question

.....

My Plan

.....
.....
.....
.....
.....

What are the possible variables in this investigation?

Which variable will I change?

.....

Which variable will I measure?

.....

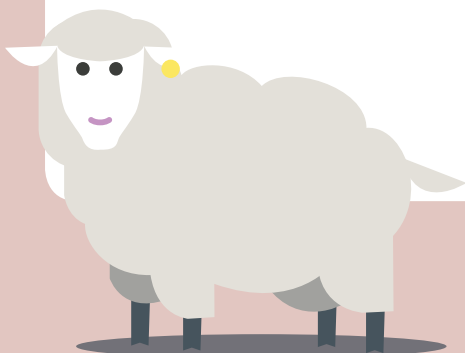
Which variables will I keep the same?

.....

.....

.....

.....



Results

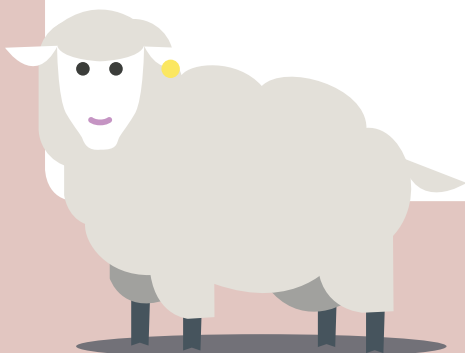
Time Elapsed (minutes)	Temperature (°C) Wool	Temperature (°C) _____	Temperature (°C) _____	Temperature (°C) _____

Discuss your results with someone who tested different materials from you.

Think about:

- Which cooled down the most?
- What material was it covered with?
- What does this mean?

Draw a line graph to show your results.





Waterproof properties Investigation

My Question

.....

My Plan

.....
.....
.....
.....
.....

What are the possible variables in this investigation?

Which variable will I change?

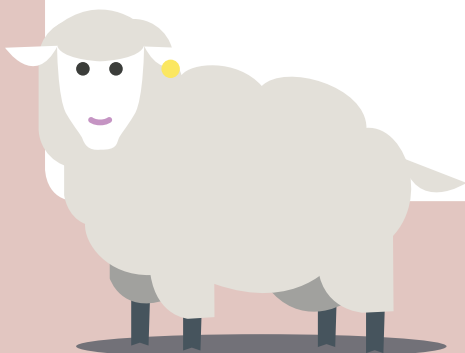
Which variable will I measure?

Which variables will I keep the same?

.....

.....

.....



Results

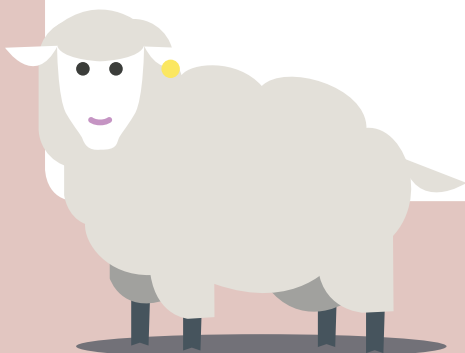
Fabric	Time taken for 20 ml of water to pass through the fabric (seconds)	Observations

Discuss your results with someone who tested different fabrics from you.

Think about:

- Which material allowed 20 ml to pass through it the slowest / fastest?
- Was it the same material for each group?
- If you tested a range of wool products, did it make a difference whether the wool was felted or woven?
- What does this mean?

Draw a bar chart to show your results.





Sound insulation Investigation

My Question

.....

My Plan

.....
.....
.....
.....
.....

What are the possible variables in this investigation?

Which variable will I change?

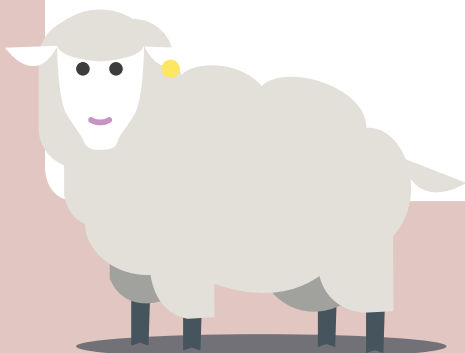
Which variable will I measure?

Which variables will I keep the same?

.....

.....

.....



Results

Fabric	Sound dB level or distance heard from

Discuss your results with someone who tested different fabrics from you.

Think about:

- Which material reduced the sound level by the most?
- Which material allowed you to hear the sound at the greatest distance away?
- Was it the same material for each group?
- If you tested a range of wool products did it make a difference if the wool was felted or woven?
- What does this mean?

Draw a bar chart to show your results.

